

References

Project: Master plan “JadeWeserPort” for a Deep Water Harbour for Container-Ships in Wilhelmshaven, Germany

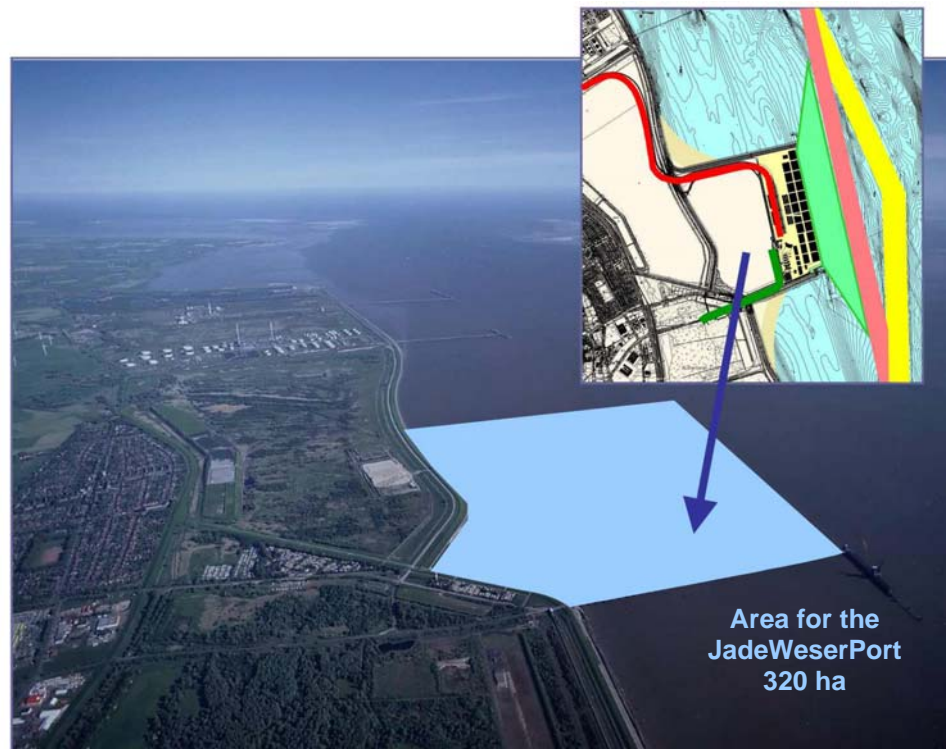
Period: May 2002 - 2004

Contract Volume: 1.450.000 €

Construction Cost: 450.000.000 €

Client: JadeWeserPort Entwicklungsgesellschaft mbH

Short Description: The harbour of Wilhelmshaven, located west of Bremen and Hamburg is currently used for bulk goods. A new container terminal for very large container ships up to 12.000 TEU is being planned there. About 320 ha land will be reclaimed and 1.750 m quay wall will be build.



IMS planning performance:

- Definition of the general planning boundaries for all involved technical disciplines
- Planning of an area layout and integration of a container ship terminal in the Jade river field (master plan)
- Preparation of application documents for planning permit
- Project management and coordination
- Participation in the permit hearings
- Support of the public relations during the planning phase